

Month: Feb'14

Table 1. Consumer Price Index (CPI) And Inflation Rate (Point To Point)

(2005-06=100)

CPI Classification	2010-11	2011-12	2012-13	2012-13			2013-14		
				Dec'12	Jan'13	Feb'13	Dec'13	Jan'14	Feb'14
NATIONAL									
General index	156.59	170.19	181.73	182.42	184.33	184.79	195.82	198.15	198.54
<i>Inflation</i>	<i>10.91</i>	<i>8.69</i>	<i>6.78</i>	<i>7.14</i>	<i>6.62</i>	<i>7.84</i>	<i>7.35</i>	<i>7.50</i>	<i>7.44</i>
Food index	170.48	183.65	193.24	194.37	196.36	196.78	211.87	213.65	214.17
<i>Inflation</i>	<i>14.11</i>	<i>7.72</i>	<i>5.22</i>	<i>5.28</i>	<i>5.02</i>	<i>7.45</i>	<i>9.00</i>	<i>8.81</i>	<i>8.84</i>
Non-food index	138.77	152.94	166.97	167.11	168.92	169.42	175.26	178.26	178.51
<i>Inflation</i>	<i>6.21</i>	<i>10.21</i>	<i>9.17</i>	<i>10.03</i>	<i>9.09</i>	<i>8.44</i>	<i>4.88</i>	<i>5.53</i>	<i>5.37</i>
RURAL									
General index	159.41	173.26	183.90	184.24	186.44	186.99	197.55	199.93	200.40
<i>Inflation</i>	<i>11.73</i>	<i>8.69</i>	<i>6.14</i>	<i>6.17</i>	<i>5.69</i>	<i>7.27</i>	<i>7.22</i>	<i>7.24</i>	<i>7.17</i>
Food index	170.81	183.62	192.14	192.74	195.11	195.65	209.37	211.48	212.12
<i>Inflation</i>	<i>15.05</i>	<i>7.50</i>	<i>4.64</i>	<i>4.31</i>	<i>4.02</i>	<i>6.77</i>	<i>8.63</i>	<i>8.39</i>	<i>8.42</i>
Non-food index	141.28	156.77	170.79	170.71	172.64	173.21	178.72	181.57	181.74
<i>Inflation</i>	<i>5.86</i>	<i>10.96</i>	<i>8.94</i>	<i>9.67</i>	<i>8.82</i>	<i>8.18</i>	<i>4.69</i>	<i>5.17</i>	<i>4.92</i>
URBAN									
General index	151.36	164.52	177.71	179.07	180.45	180.72	192.64	194.84	195.12
<i>Inflation</i>	<i>9.34</i>	<i>8.70</i>	<i>8.02</i>	<i>9.04</i>	<i>8.44</i>	<i>8.97</i>	<i>7.58</i>	<i>7.97</i>	<i>7.97</i>
Food index	169.68	183.71	195.91	198.33	199.42	199.53	217.94	218.97	219.17
<i>Inflation</i>	<i>11.88</i>	<i>8.27</i>	<i>6.64</i>	<i>7.65</i>	<i>7.50</i>	<i>9.10</i>	<i>9.89</i>	<i>9.80</i>	<i>9.84</i>
Non-food index	135.43	147.84	161.88	162.31	163.95	164.36	170.64	173.85	174.20
<i>Inflation</i>	<i>6.70</i>	<i>9.16</i>	<i>9.50</i>	<i>10.55</i>	<i>9.45</i>	<i>8.82</i>	<i>5.13</i>	<i>6.04</i>	<i>5.99</i>

Fig-1: Annual Inflation Rate

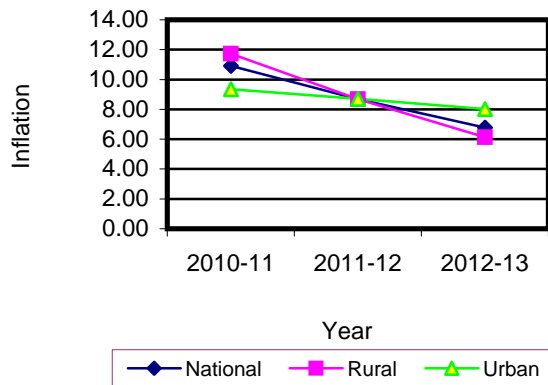


Fig-2: Monthly Inflation Rate

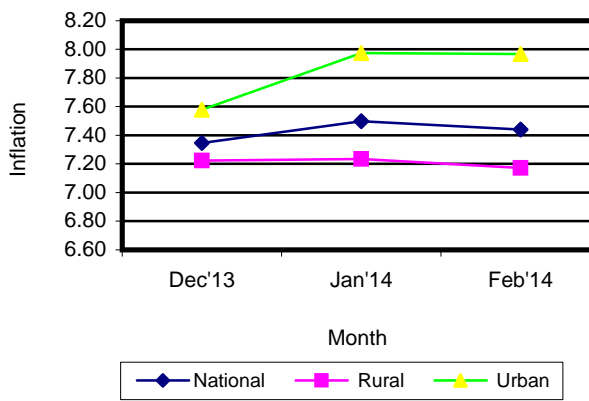


Table 2. Consumer Price Index (CPI) : National

(On Monthly Basis)

(2005-06=100)

CPI Classification	2010-11	2011-12	2012-13	2012-13			2013-14		
				Dec'12	Jan'13	Feb'13	Dec'13	Jan'14	Feb'14
General	156.59	170.19	181.73	182.42	184.33	184.79	195.82	198.15	198.54
	<i>10.92</i>	<i>8.69</i>	<i>6.78</i>	0.36	1.05	0.25	0.54	1.19	0.20
1. Food, beverage & tobacco	170.48	183.65	193.24	194.37	196.36	196.78	211.87	213.65	214.17
	<i>14.11</i>	<i>7.73</i>	<i>5.22</i>	0.35	1.02	0.21	0.78	0.84	0.24
2. Non-food	138.77	152.94	166.97	167.11	168.92	169.42	175.26	178.26	178.51
	<i>6.21</i>	<i>10.21</i>	<i>9.17</i>	0.38	1.08	0.30	0.19	1.71	0.14
I. Clothing & footwear	140.09	160.79	179.66	180.44	181.82	182.65	193.56	198.38	198.79
	<i>7.24</i>	<i>14.78</i>	<i>11.74</i>	0.67	0.76	0.46	0.37	2.49	0.21
II. Gross rent, fuel & lighting	132.33	143.36	155.61	155.08	157.07	157.39	161.10	166.53	166.62
	<i>4.82</i>	<i>8.34</i>	<i>8.54</i>	0.11	1.28	0.20	0.10	3.37	0.05
III. Furniture, furnishing, househ equipments & operation	158.13	175.58	195.33	196.65	196.98	198.21	206.32	207.40	208.03
	<i>11.72</i>	<i>11.04</i>	<i>11.25</i>	0.75	0.17	0.62	0.32	0.52	0.30
IV. Medical care & health expen:	144.55	152.63	159.66	159.90	160.20	160.49	163.94	165.24	165.41
	<i>7.99</i>	<i>5.59</i>	<i>4.61</i>	0.16	0.19	0.18	0.24	0.79	0.10
V. Transport & communication	127.44	148.58	159.34	159.35	161.60	161.86	167.15	167.78	168.11
	<i>3.32</i>	<i>16.59</i>	<i>7.24</i>	0.49	1.41	0.16	0.23	0.38	0.20
VI. Recreation, entertainment, education & cultural services	139.52	144.48	157.23	156.34	160.55	160.89	164.38	164.55	164.72
	<i>5.16</i>	<i>3.56</i>	<i>8.82</i>	0.42	2.69	0.21	0.03	0.10	0.10
VII. Misc. goods & services	148.68	164.57	182.54	184.00	185.66	186.13	194.02	195.01	195.17
	<i>5.93</i>	<i>10.69</i>	<i>10.92</i>	0.33	0.90	0.25	0.10	0.51	0.08

Note : Figures in italics indicate inflation over previous year/month

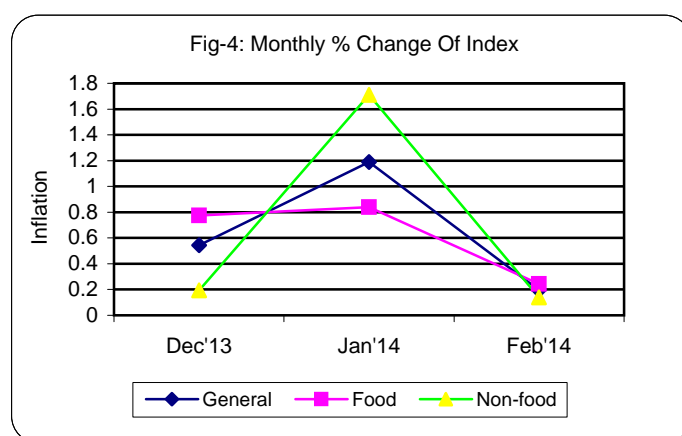
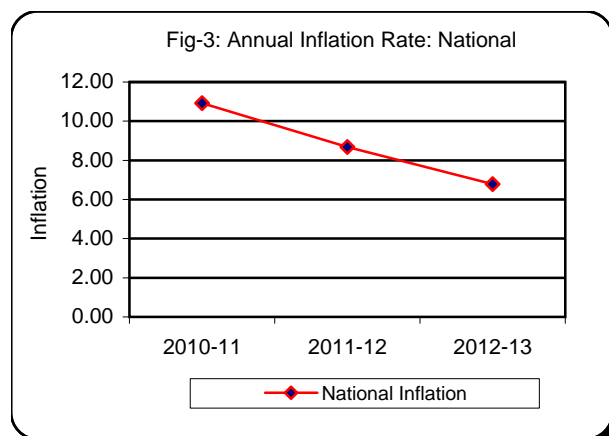


Table 3. Consumer Price Index (CPI) : Rural

(On Monthly Basis)

(2005-06=100)

CPI Classification	2010-11	2011-12	2012-13	2012-13			2013-14		
				Dec'12	Jan'13	Feb'13	Dec'13	Jan'14	Feb'14
General	159.41	173.26	183.90	184.24	186.44	186.99	197.55	199.93	200.40
	<i>11.73</i>	<i>8.69</i>	<i>6.14</i>	<i>0.29</i>	<i>1.19</i>	<i>0.30</i>	<i>0.57</i>	<i>1.20</i>	<i>0.24</i>
1. Food, beverage & tobacco	170.81	183.62	192.14	192.74	195.11	195.65	209.37	211.48	212.12
	<i>15.05</i>	<i>7.50</i>	<i>4.64</i>	<i>0.26</i>	<i>1.23</i>	<i>0.28</i>	<i>0.78</i>	<i>1.01</i>	<i>0.30</i>
2. Non-food	141.28	156.77	170.79	170.71	172.64	173.21	178.72	181.57	181.74
	<i>5.86</i>	<i>10.96</i>	<i>8.94</i>	<i>0.34</i>	<i>1.13</i>	<i>0.33</i>	<i>0.16</i>	<i>1.59</i>	<i>0.09</i>
I. Clothing & footwear	143.51	164.55	184.54	185.29	186.88	187.64	198.51	205.55	205.62
	<i>8.54</i>	<i>14.66</i>	<i>12.15</i>	<i>0.48</i>	<i>0.86</i>	<i>0.41</i>	<i>0.31</i>	<i>3.55</i>	<i>0.03</i>
II. Gross rent, fuel & lighting	134.08	146.37	157.40	156.09	158.95	159.43	162.57	165.87	166.00
	<i>3.74</i>	<i>9.17</i>	<i>7.54</i>	<i>0.17</i>	<i>1.83</i>	<i>0.30</i>	<i>0.09</i>	<i>2.03</i>	<i>0.08</i>
III. Furniture, furnishing, househ equipments & operation	155.22	169.35	186.40	187.10	187.31	188.91	197.66	198.94	199.37
	<i>9.50</i>	<i>9.10</i>	<i>10.07</i>	<i>0.79</i>	<i>0.11</i>	<i>0.85</i>	<i>0.39</i>	<i>0.65</i>	<i>0.22</i>
IV. Medical care & health expen:	147.33	156.87	164.63	164.86	165.13	165.41	168.48	170.42	170.55
	<i>6.92</i>	<i>6.48</i>	<i>4.95</i>	<i>0.19</i>	<i>0.16</i>	<i>0.17</i>	<i>0.17</i>	<i>1.15</i>	<i>0.08</i>
V. Transport & communication	125.37	150.60	160.98	161.48	162.61	162.77	165.54	166.19	166.47
	<i>3.36</i>	<i>20.12</i>	<i>6.89</i>	<i>0.27</i>	<i>0.71</i>	<i>0.10</i>	<i>0.05</i>	<i>0.39</i>	<i>0.17</i>
VI. Recreation, entertainment, education & cultural services	151.11	158.26	174.07	173.54	177.24	177.27	179.24	179.50	179.64
	<i>5.19</i>	<i>4.73</i>	<i>9.99</i>	<i>0.06</i>	<i>2.13</i>	<i>0.02</i>	<i>0.03</i>	<i>0.15</i>	<i>0.08</i>
VII. Misc. goods & services	150.17	168.84	187.05	188.14	190.73	191.23	199.92	201.17	201.32
	<i>5.43</i>	<i>12.43</i>	<i>10.79</i>	<i>0.50</i>	<i>1.38</i>	<i>0.26</i>	<i>0.05</i>	<i>0.63</i>	<i>0.07</i>

Note : Figures in italics indicate inflation over previous year/month

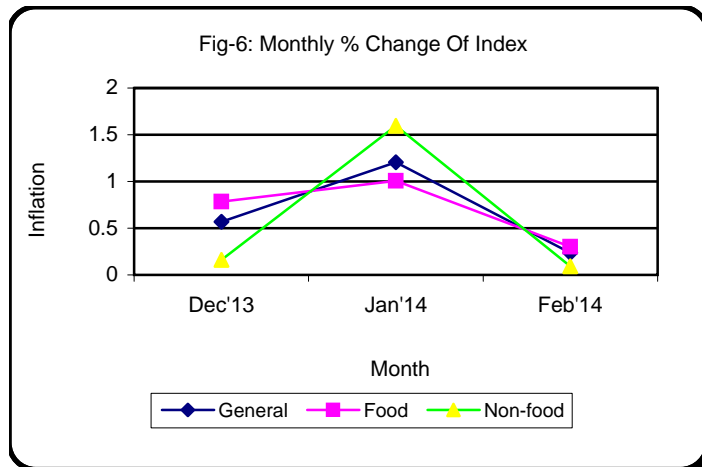
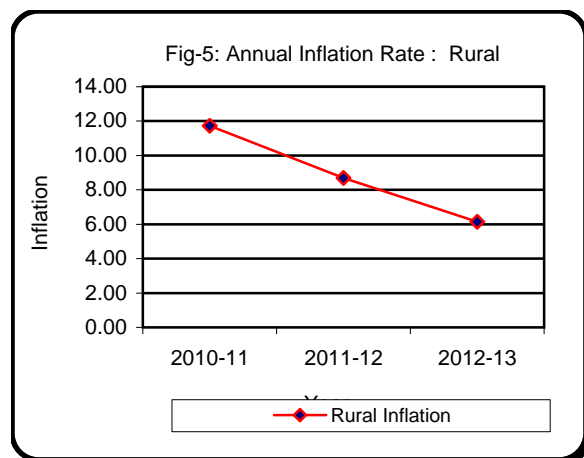


Table 4. Consumer Price Index (CPI) : Urban

(On Monthly Basis)

(2005-06=100)

CPI Classification	2010-11	2011-12	2012-13	2012-13			2013-14		
				Dec'12	Jan'13	Feb'13	Dec'13	Jan'14	Feb'14
General	151.36	164.52	177.71	179.07	180.45	180.72	192.64	194.84	195.12
	<i>9.34</i>	<i>8.69</i>	<i>8.02</i>	<i>0.49</i>	<i>0.77</i>	<i>0.15</i>	<i>0.50</i>	<i>1.14</i>	<i>0.14</i>
1. Food, beverage & tobacco	169.68	183.71	195.91	198.33	199.42	199.53	217.94	218.97	219.17
	<i>11.88</i>	<i>8.27</i>	<i>6.64</i>	<i>0.54</i>	<i>0.55</i>	<i>0.06</i>	<i>0.74</i>	<i>0.47</i>	<i>0.09</i>
2. Non-food	135.43	147.84	161.88	162.31	163.95	164.36	170.64	173.85	174.20
	<i>6.71</i>	<i>9.16</i>	<i>9.50</i>	<i>0.45</i>	<i>1.01</i>	<i>0.25</i>	<i>0.23</i>	<i>1.88</i>	<i>0.20</i>
I. Clothing & footwear	133.58	153.65	170.39	171.25	172.21	173.16	184.16	184.77	185.81
	<i>4.69</i>	<i>15.02</i>	<i>10.89</i>	<i>1.07</i>	<i>0.56</i>	<i>0.55</i>	<i>0.47</i>	<i>0.33</i>	<i>0.56</i>
II. Gross rent, fuel & lighting	130.30	139.88	153.55	153.91	154.90	155.04	159.39	167.29	167.33
	<i>6.13</i>	<i>7.35</i>	<i>9.77</i>	<i>0.05</i>	<i>0.64</i>	<i>0.09</i>	<i>0.11</i>	<i>4.96</i>	<i>0.02</i>
III. Furniture, furnishing, household equipments & operation	163.26	186.54	211.03	213.46	213.98	214.58	221.55	222.29	223.26
	<i>15.66</i>	<i>14.26</i>	<i>13.13</i>	<i>0.71</i>	<i>0.24</i>	<i>0.28</i>	<i>0.20</i>	<i>0.33</i>	<i>0.44</i>
IV. Medical care & health expenditure	139.80	145.37	151.15	151.41	151.77	152.08	156.16	156.37	156.61
	<i>9.99</i>	<i>3.98</i>	<i>3.98</i>	<i>0.09</i>	<i>0.24</i>	<i>0.20</i>	<i>0.35</i>	<i>0.13</i>	<i>0.15</i>
V. Transport & communication	129.72	146.34	157.53	157.01	160.48	160.85	168.93	169.53	169.93
	<i>3.27</i>	<i>12.81</i>	<i>7.65</i>	<i>0.73</i>	<i>2.21</i>	<i>0.23</i>	<i>0.42</i>	<i>0.36</i>	<i>0.24</i>
VI. Recreation, entertainment, education & cultural services	127.01	129.61	139.06	137.78	142.53	143.21	148.35	148.43	148.61
	<i>5.11</i>	<i>2.05</i>	<i>7.29</i>	<i>0.92</i>	<i>3.45</i>	<i>0.48</i>	<i>0.03</i>	<i>0.05</i>	<i>0.12</i>
VII. Misc. goods & services	146.83	159.31	176.96	178.90	179.41	179.83	186.75	187.40	187.57
	<i>6.55</i>	<i>8.50</i>	<i>11.08</i>	<i>0.11</i>	<i>0.29</i>	<i>0.23</i>	<i>0.18</i>	<i>0.35</i>	<i>0.09</i>

Note : Figures in italics indicate inflation over previous year/month

