

Month: January 2014

Table 1. Consumer Price Index (CPI) And Inflation Rate (Point To Point)

(2005-06=100)

CPI Classification	2010-11	2011-12	2012-13	2012-13			2013-14		
				Nov'12	Dec'12	Jan'13	Nov'13	Dec'13	Jan'14
NATIONAL									
General index	156.59	170.19	181.73	181.77	182.42	184.33	194.76	195.82	198.15
<i>Inflation</i>	<i>10.91</i>	<i>8.69</i>	<i>6.78</i>	<i>6.55</i>	<i>7.14</i>	<i>6.62</i>	<i>7.15</i>	<i>7.35</i>	<i>7.50</i>
Food index	170.48	183.65	193.24	193.70	194.37	196.36	210.27	211.87	213.65
<i>Inflation</i>	<i>14.11</i>	<i>7.72</i>	<i>5.22</i>	<i>3.94</i>	<i>5.28</i>	<i>5.02</i>	<i>8.55</i>	<i>9.00</i>	<i>8.81</i>
Non-food index	138.77	152.94	166.97	166.47	167.11	168.92	174.92	175.26	178.26
<i>Inflation</i>	<i>6.21</i>	<i>10.21</i>	<i>9.17</i>	<i>10.68</i>	<i>10.03</i>	<i>9.09</i>	<i>5.08</i>	<i>4.88</i>	<i>5.53</i>
RURAL									
General index	159.41	173.26	183.90	183.71	184.24	186.44	196.43	197.55	199.93
<i>Inflation</i>	<i>11.73</i>	<i>8.69</i>	<i>6.14</i>	<i>5.60</i>	<i>6.17</i>	<i>5.69</i>	<i>6.92</i>	<i>7.22</i>	<i>7.24</i>
Food index	170.81	183.62	192.14	192.24	192.74	195.11	207.74	209.37	211.48
<i>Inflation</i>	<i>15.05</i>	<i>7.50</i>	<i>4.64</i>	<i>3.15</i>	<i>4.31</i>	<i>4.02</i>	<i>8.06</i>	<i>8.63</i>	<i>8.39</i>
Non-food index	141.28	156.77	170.79	170.13	170.71	172.64	178.43	178.72	181.57
<i>Inflation</i>	<i>5.86</i>	<i>10.96</i>	<i>8.94</i>	<i>10.30</i>	<i>9.67</i>	<i>8.82</i>	<i>4.88</i>	<i>4.69</i>	<i>5.17</i>
URBAN									
General index	151.36	164.52	177.71	178.19	179.07	180.45	191.69	192.64	194.84
<i>Inflation</i>	<i>9.34</i>	<i>8.70</i>	<i>8.02</i>	<i>8.41</i>	<i>9.04</i>	<i>8.44</i>	<i>7.58</i>	<i>7.58</i>	<i>7.97</i>
Food index	169.68	183.71	195.91	197.27	198.33	199.42	216.34	217.94	218.97
<i>Inflation</i>	<i>11.88</i>	<i>8.27</i>	<i>6.64</i>	<i>5.88</i>	<i>7.65</i>	<i>7.50</i>	<i>9.67</i>	<i>9.89</i>	<i>9.80</i>
Non-food index	135.43	147.84	161.88	161.59	162.31	163.95	170.24	170.64	173.85
<i>Inflation</i>	<i>6.70</i>	<i>9.16</i>	<i>9.50</i>	<i>11.23</i>	<i>10.55</i>	<i>9.45</i>	<i>5.35</i>	<i>5.13</i>	<i>6.04</i>

Fig-1: Annual Inflation Rate

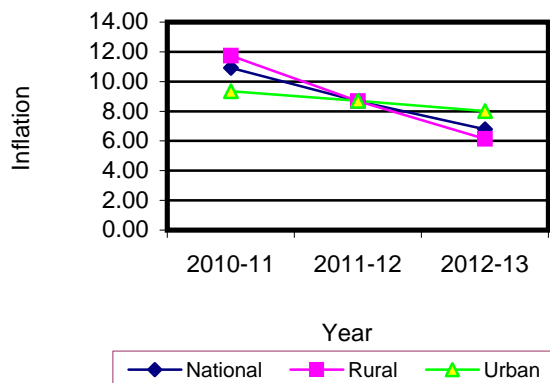


Fig-2: Monthly Inflation Rate

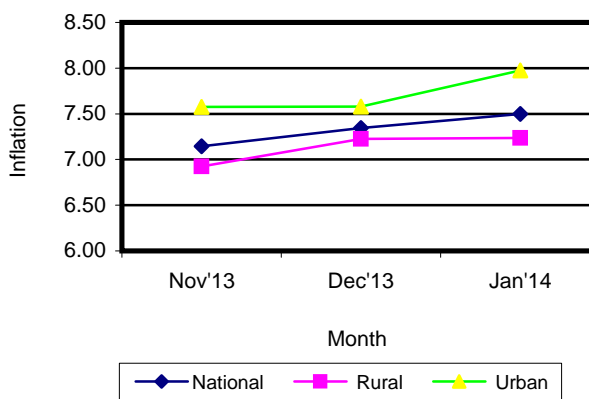


Table 2. Consumer Price Index (CPI) : National

(On Monthly Basis)

(2005-06=100)

CPI Classification	2010-11	2011-12	2012-13	2012-13			2013-14		
				Nov'12	Dec'12	Jan'13	Nov'13	Dec'13	Jan'14
General	156.59	170.19	181.73	181.77	182.42	184.33	194.76	195.82	198.15
	<i>10.92</i>	<i>8.69</i>	<i>6.78</i>	0.28	0.36	1.05	0.39	0.54	1.19
1. Food, beverage & tobacco	170.48	183.65	193.24	193.70	194.37	196.36	210.24	211.87	213.65
	<i>14.11</i>	<i>7.73</i>	<i>5.22</i>	0.33	0.35	1.02	0.47	0.78	0.84
2. Non-food	138.77	152.94	166.97	166.47	167.11	168.92	174.92	175.26	178.26
	<i>6.21</i>	<i>10.21</i>	<i>9.17</i>	0.21	0.38	1.08	0.26	0.19	1.71
I. Clothing & footwear	140.09	160.79	179.66	179.24	180.44	181.82	192.85	193.56	198.38
	<i>7.24</i>	<i>14.78</i>	<i>11.74</i>	0.15	0.67	0.76	0.52	0.37	2.49
II. Gross rent, fuel & lighting	132.33	143.36	155.61	154.91	155.08	157.07	160.94	161.10	166.53
	<i>4.82</i>	<i>8.34</i>	<i>8.54</i>	0.14	0.11	1.28	0.26	0.10	3.37
III. Furniture, furnishing, househ equipments & operation	158.13	175.58	195.33	195.18	196.65	196.98	205.67	206.32	207.40
	<i>11.72</i>	<i>11.04</i>	<i>11.25</i>	0.39	0.75	0.17	0.21	0.32	0.52
IV. Medical care & health expen:	144.55	152.63	159.66	159.65	159.90	160.20	163.55	163.94	165.24
	<i>7.99</i>	<i>5.59</i>	<i>4.61</i>	0.04	0.16	0.19	0.25	0.24	0.79
V. Transport & communication	127.44	148.58	159.34	158.57	159.35	161.60	166.77	167.15	167.78
	<i>3.32</i>	<i>16.59</i>	<i>7.24</i>	0.11	0.49	1.41	0.29	0.23	0.38
VI. Recreation, entertainment, education & cultural services	139.52	144.48	157.23	155.68	156.34	160.55	164.33	164.38	164.55
	<i>5.16</i>	<i>3.56</i>	<i>8.82</i>	0.24	0.42	2.69	0.02	0.03	0.10
VII. Misc. goods & services	148.68	164.57	182.54	183.40	184.00	185.66	193.82	194.02	195.01
	<i>5.93</i>	<i>10.69</i>	<i>10.92</i>	0.58	0.33	0.90	0.06	0.10	0.51

Note : Figures in italics indicate inflation over previous year/month

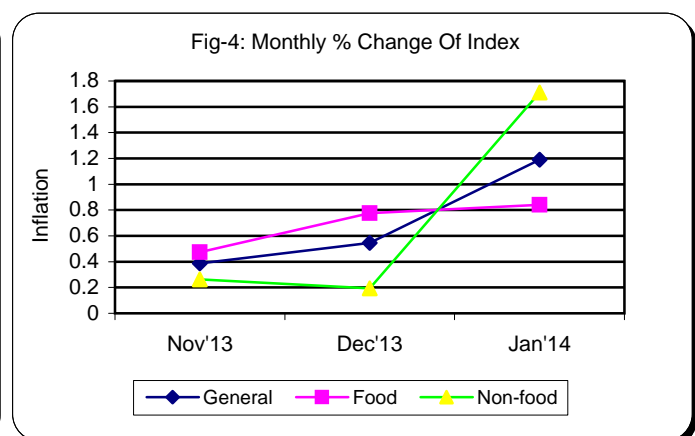
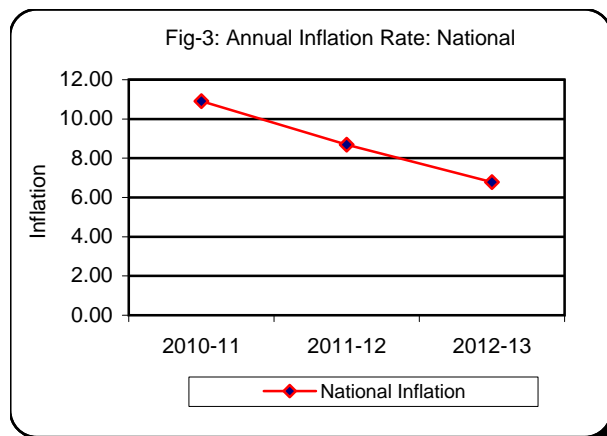


Table 3. Consumer Price Index (CPI) : Rural

(On Monthly Basis)

(2005-06=100)

CPI Classification	2010-11	2011-12	2012-13	2012-13			2013-14		
				Nov'12	Dec'12	Jan'13	Nov'13	Dec'13	Jan'14
General	159.41	173.26	183.90	183.71	184.24	186.44	196.43	197.55	199.93
	<i>11.73</i>	<i>8.69</i>	<i>6.14</i>	0.23	0.29	1.19	0.37	0.57	1.20
1. Food, beverage & tobacco	170.81	183.62	192.14	192.24	192.74	195.11	207.74	209.37	211.48
	<i>15.05</i>	<i>7.50</i>	<i>4.64</i>	0.22	0.26	1.23	0.41	0.78	1.01
2. Non-food	141.28	156.77	170.79	170.13	170.71	172.64	178.43	178.72	181.57
	<i>5.86</i>	<i>10.96</i>	<i>8.94</i>	0.25	0.34	1.13	0.29	0.16	1.59
I. Clothing & footwear	143.51	164.55	184.54	184.40	185.29	186.88	197.89	198.51	205.55
	<i>8.54</i>	<i>14.66</i>	<i>12.15</i>	0.15	0.48	0.86	0.54	0.31	3.55
II. Gross rent, fuel & lighting	134.08	146.37	157.40	155.83	156.09	158.95	162.43	162.57	165.87
	<i>3.74</i>	<i>9.17</i>	<i>7.54</i>	0.21	0.17	1.83	0.43	0.09	2.03
III. Furniture, furnishing, househ equipments & operation	155.22	169.35	186.40	185.64	187.10	187.31	196.89	197.66	198.94
	<i>9.50</i>	<i>9.10</i>	<i>10.07</i>	0.44	0.79	0.11	0.10	0.39	0.65
IV. Medical care & health expen:	147.33	156.87	164.63	164.54	164.86	165.13	168.19	168.48	170.42
	<i>6.92</i>	<i>6.48</i>	<i>4.95</i>	0.00	0.19	0.16	0.30	0.17	1.15
V. Transport & communication	125.37	150.60	160.98	161.02	161.48	162.61	165.46	165.54	166.19
	<i>3.36</i>	<i>20.12</i>	<i>6.89</i>	0.11	0.27	0.71	0.15	0.05	0.39
VI. Recreation, entertainment, education & cultural services	151.11	158.26	174.07	173.43	173.54	177.24	179.18	179.24	179.50
	<i>5.19</i>	<i>4.73</i>	<i>9.99</i>	0.18	0.06	2.13	0.02	0.03	0.15
VII. Misc. goods & services	150.17	168.84	187.05	187.21	188.14	190.73	199.82	199.92	201.17
	<i>5.43</i>	<i>12.43</i>	<i>10.79</i>	0.80	0.50	1.38	0.06	0.05	0.63

Note : Figures in italics indicate inflation over previous year/month

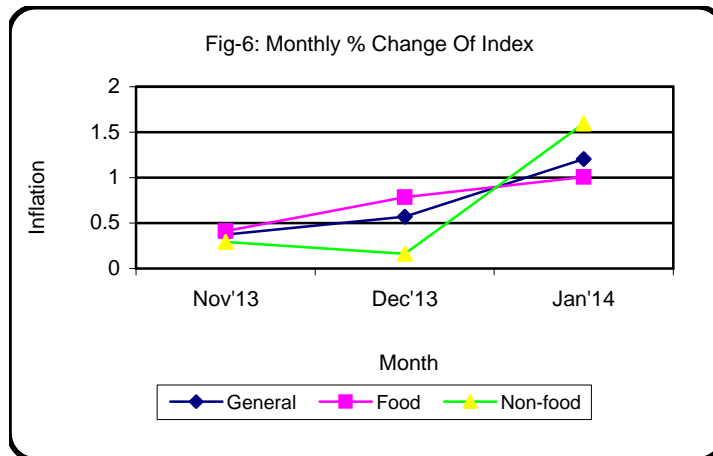
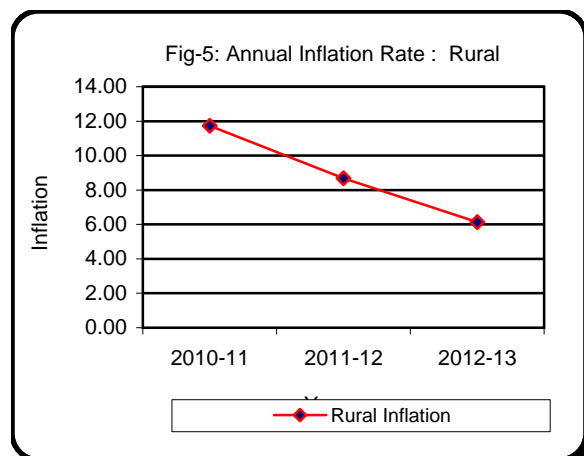


Table 4. Consumer Price Index (CPI) : Urban

(On Monthly Basis)

(2005-06=100)

CPI Classification	2010-11	2011-12	2012-13	2012-13			2013-14		
				Nov'12	Dec'12	Jan'13	Nov'13	Dec'13	Jan'14
General	151.36	164.52	177.71	178.19	179.07	180.45	191.69	192.64	194.84
	<i>9.34</i>	<i>8.69</i>	<i>8.02</i>	<i>0.37</i>	<i>0.49</i>	<i>0.77</i>	<i>0.42</i>	<i>0.50</i>	<i>1.14</i>
1. Food , beverage & tobacco	169.68	183.71	195.91	197.27	198.33	199.42	216.34	217.94	218.97
	<i>11.88</i>	<i>8.27</i>	<i>6.64</i>	<i>0.58</i>	<i>0.54</i>	<i>0.55</i>	<i>0.61</i>	<i>0.74</i>	<i>0.47</i>
2. Non-food	135.43	147.84	161.88	161.59	162.31	163.95	170.24	170.64	173.85
	<i>6.71</i>	<i>9.16</i>	<i>9.50</i>	<i>0.15</i>	<i>0.45</i>	<i>1.01</i>	<i>0.22</i>	<i>0.23</i>	<i>1.88</i>
I. Clothing & footwear	133.58	153.65	170.39	169.44	171.25	172.21	183.29	184.16	184.77
	<i>4.69</i>	<i>15.02</i>	<i>10.89</i>	<i>0.14</i>	<i>1.07</i>	<i>0.56</i>	<i>0.49</i>	<i>0.47</i>	<i>0.33</i>
II. Gross rent, fuel & lighting	130.30	139.88	153.55	153.84	153.91	154.90	159.21	159.39	167.29
	<i>6.13</i>	<i>7.35</i>	<i>9.77</i>	<i>0.05</i>	<i>0.05</i>	<i>0.64</i>	<i>0.07</i>	<i>0.11</i>	<i>4.96</i>
III. Furniture, furnishing, household equipments & operation	163.26	186.54	211.03	211.95	213.46	213.98	221.11	221.55	222.29
	<i>15.66</i>	<i>14.26</i>	<i>13.13</i>	<i>0.29</i>	<i>0.71</i>	<i>0.24</i>	<i>0.39</i>	<i>0.20</i>	<i>0.33</i>
IV. Medical care & health expenditure	139.80	145.37	151.15	151.27	151.41	151.77	155.62	156.16	156.37
	<i>9.99</i>	<i>3.98</i>	<i>3.98</i>	<i>0.11</i>	<i>0.09</i>	<i>0.24</i>	<i>0.15</i>	<i>0.35</i>	<i>0.13</i>
V. Transport & communication	129.72	146.34	157.53	155.87	157.01	160.48	168.22	168.93	169.53
	<i>3.27</i>	<i>12.81</i>	<i>7.65</i>	<i>0.12</i>	<i>0.73</i>	<i>2.21</i>	<i>0.45</i>	<i>0.42</i>	<i>0.36</i>
VI. Recreation, entertainment, education & cultural services	127.01	129.61	139.06	136.53	137.78	142.53	148.30	148.35	148.43
	<i>5.11</i>	<i>2.05</i>	<i>7.29</i>	<i>0.32</i>	<i>0.92</i>	<i>3.45</i>	<i>0.02</i>	<i>0.03</i>	<i>0.05</i>
VII. Misc. goods & services	146.83	159.31	176.96	178.70	178.90	179.41	186.42	186.75	187.40
	<i>6.55</i>	<i>8.50</i>	<i>11.08</i>	<i>0.29</i>	<i>0.11</i>	<i>0.29</i>	<i>0.06</i>	<i>0.18</i>	<i>0.35</i>

Note : Figures in italics indicate inflation over previous year/month

